



RECP #: 754592
 RECORDED 6/5/2019 AT 3:33 PM BK# 2624 PG# 261
 Debra K. Lee, CLERK OF LARAMIE COUNTY, WY PAGE 1 OF 1

STATE OF WYOMING CORNER RECORD

(In compliance with the CORNER PERPETUATION AND FILING ACT, Wyoming Statutes, 1997 Section 33-29-140, et. seq., and the Rules and Regulations of the Board of Registrations for Professional Engineers and Professional Land Surveyors)

NORTHEAST CORNER SECTION 24, T. 18 N., R. 62 W., 6TH P.M., LARAMIE COUNTY, WYOMING

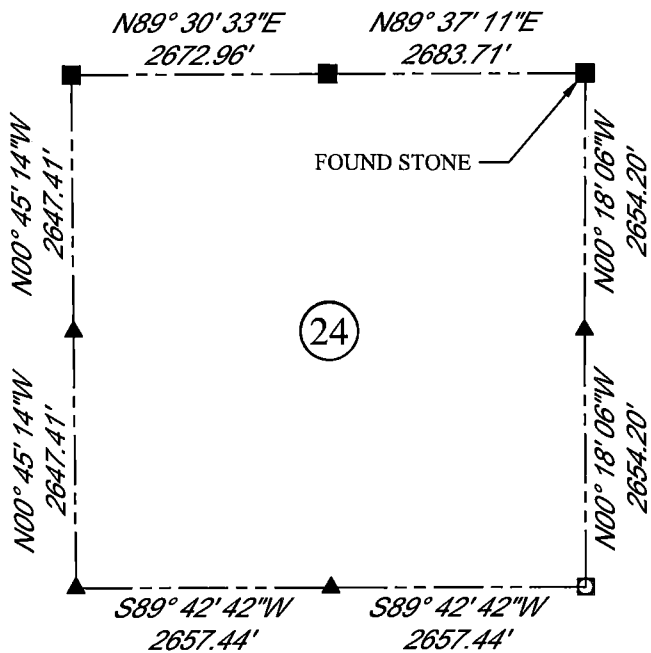
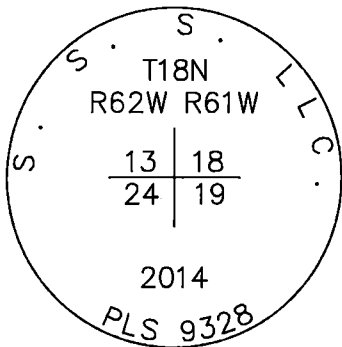
GLO: SET A SANDSTONE 20X12X3 15 IN DEEP WITH 3 MARKS ON N. & S. SIDES FOR CORNER TO SECTIONS 13, 18, 19, AND 24.

FOUND: 3.25" ALUMINUM CAP ON #5 REBAR, 0.4' ABOVE SURFACE, MARKED AS SHOWN. SET ON W. SIDE OF FIRM SET STONE, WITH A STEEL POST ON NW. SIDE. CAP & STONE ARE 4' E. OF N & S FENCE LINE.



SCALE: NONE
 NORTH DETERMINED BY
 G.P.S OBSERVATIONS

FOUND 3.25" ALUMINUM CAP, STAMPED AS SHOWN



LEGEND:

- FOUND BLM CAP
- ⊙ FOUND USFS CAP
- FOUND STONE
- FOUND PRIVATE MONUMENT
- ◆ CALCULATED POSITION
- ▲ SET MONUMENT (LS10245)
- SECTION LINE

DATE OF FIELD WORK: 09/05/2018 OFFICE REFERENCE: MERIDEN

CROSS INDEX DIAGRAM

	1	2	3	4	5	6	7	8	9	10	11	12	13	14	15	16	17	18	19	20	21	22	23	24	25	
A																										
B																										
C		6		5		4		3		2		1														
D																										
E																										
F																										
G		7		8		9		10		11		12														
H																										
J																										
K																										
L		18		17		16		15		14		13														
M																										
N																										
O																										
P		19		20		21		22		23		24														
Q																										
R																										
S																										
T		30		29		28		27		26		25														
U																										
V																										
W																										
X		31		32		33		34		35		36														
Y																										
Z																										

WOOD
 2615 AVIATION DRIVE
 SHERIDAN, WY 82801
 PH: 307-675-6400



THIS CORNER RECORD WAS
 PREPARED BY ME OR UNDER
 MY DIRECTION AND
 SUPERVISION,
 SEAL AND SIGNATURE

